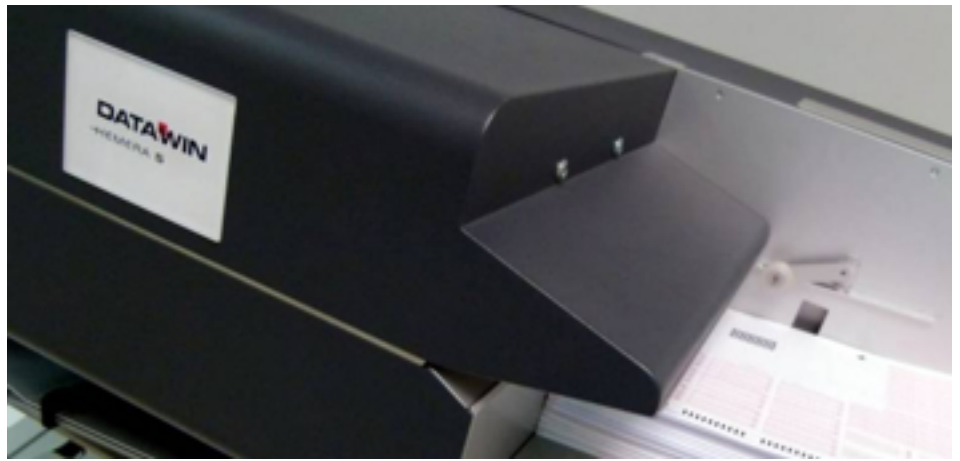


## HEMERA S

**High-Volume  
Document Scanner  
with three sorting trays**



### Brief specification

- Mixed document
- US-check to DIN A3
- 1'000 docs feeder (ADF)
- LED-illumination

### Common options

- Patchcode
- Printer pre- and postscan
- MICR

### Example applications

- Inbox Scanning
- Archiving
- Elections
- Voting

### About DATAWIN

- Development, design and production of high-end documents scanners and OMRs at Ergolding, next to Munich
- Worldwide partners and installations
- Quality made in Germany: 30 years experience and certified by the European quality norm ISO 9001:2015

HEMERA S is a document scanner with automatic stack feed and sorting in three trays. With its open paper path an easy paper handling is guaranteed, service and maintenance costs are low.

HEMERA S processes up to 360 documents duplex per minute (720 pages). It is thereby possible to process documents from the size of US checks up to DIN A3 documents in the same run, just as also folded documents.

HEMERA S was developed in order to digitize large volumes of documents in short periods of time, to archive, to evaluate and/or to sort them. Its high scanning speed in connection with its operating ease enable the greatest possible time and cost efficiency in document management.

HEMERA S is available with options as patchcode reading, MICR-recognition, pre-/postscan printing, dualstream scanning and barcode recognition.



# HEMERA S

## Technical specifications



Resolution	DIN A3 per min. duplex / color*	DIN A4 per Min. duplex / color*	DIN A5 per Min. duplex / color*	DIN A6 per Min. duplex / color*
200 DPI	260	360	420	520
300 DPI	130	260	360	400

\* Dualstream (color & b/w) without throughput restriction possible

### Mechanic

- Automatic batch feed (ADF)
- Stack capacity: up to 1'000 documents
- Automatic document adjustment
- Double sheet detection: ultra-sonic (optional multiple sensors)
- Sorter: 3 guided output trays
- Long-time steady silicon rollers

### Document

- Paper-format: min. 124 x 70 mm, max. 430 x 320mm
- Scan-format: max. 430 x 310 mm
- Weight: 40 - 200 g/m<sup>2</sup>

### Image

- 200 & 300 DPI
- Optical resolution: 300 DPI CCD-camera
- Energy-efficient LED-lightning
- Color, greyscale, black & white images
- definable snippets
- Image processing: embedded system
- Deskewing, digital color-filter, Auto-Cropping, etc..
- Standard-file-format: JPG, TIFF

### Interfaces

- USB 2.0 & 3.0: API
- ScanClient without volume-restriction
- With embedded PC: Ethernet (network ready)

### Surrounding

- Dimensions: 1050x650x640 mm, Weight: 85 - 95 kg
- Ambient temperature: +10° C bis 40° C
- Relative humidity: 20 - 80%, condensation free
- Integrated power supply 110V – 250V AC
- Standby 70 W, Run 500 W

### Supported OS

- MS Windows 7/8/10 (32 and 64 bit)

### Control panel

- Status LED
- Optional touchscreen

### Options

- Patchcode
- Barcode (1D & 2D)
- JPG2000, PDF, Multipage-TIFF, PDF-A, searchable PDF
- Optical resolution up to 1'000 DPI
- Pre-/Postscan inkjet printer
- integrated PC Kontron i7, 8GB RAM, 1TB Harddrive
- MICR (E13B, CMC7)
- Long document scanning
- TWAIN etc. on request
- OMR-reading head red light or infra-red
- 12 to 48-tracks, 1/4", 1/5" und 1/6"
- TMN-Multilevelreading

#### DATAWIN GmbH

Etzstr. 37 • 84030 Ergolding • Germany  
Fon +49 871 430 599-0 • Fax +49 871 430 599-29  
kontakt@datawin.de • www.datawin.de  
Version 01/2016 – technical modifications reserved