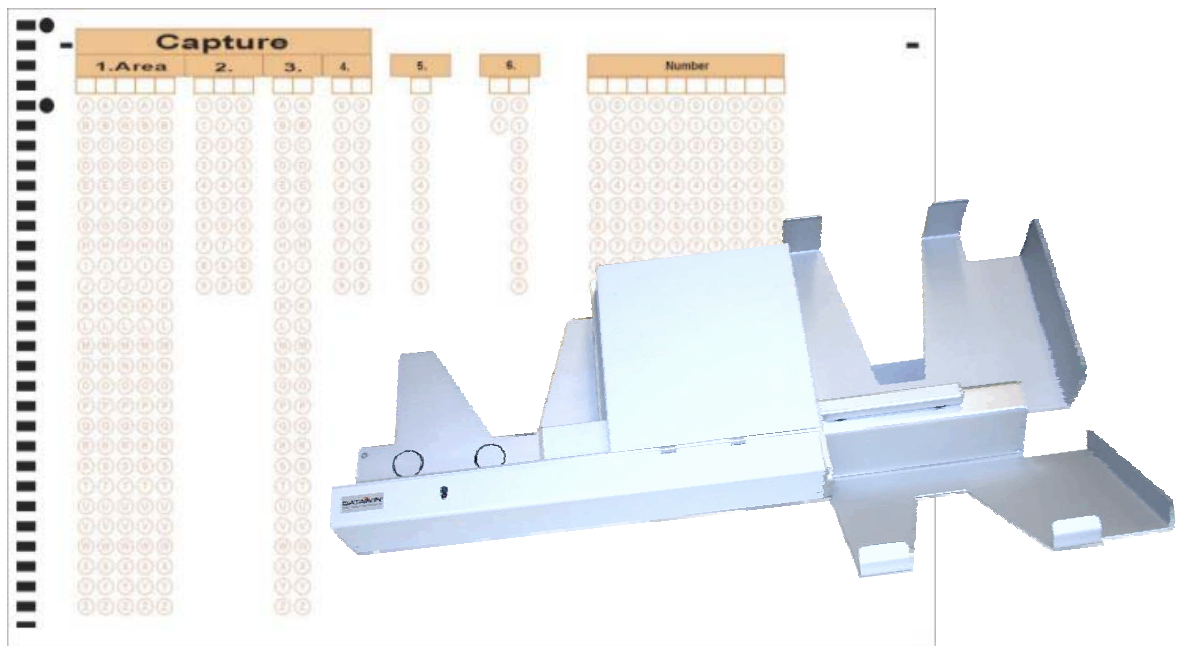


# EXAM

## Software



## Documentation

English

Publisher:  
DATAWIN GmbH  
Etzstrasse 37  
D-84030 Ergolding  
Tel. : + 49 (0)871-43 05 99 0  
Fax: + 49 (0)871-43 05 99 29  
E-mail: [service@datawin.de](mailto:service@datawin.de)  
Web: <http://www.datawin.de>

Printed in Germany  
**Subject to alteration**

Windows is a registered trademark of the Microsoft Corporation.  
**Copyright © DATAWIN GmbH**

All rights reserved  
This manual is the intellectual property of DATAWIN GmbH.  
Unauthorized use, duplication or distribution is prohibited.  
Any reproduction of the contents of this manual, in whole or in part, without written permission of DATAWIN GmbH is forbidden.

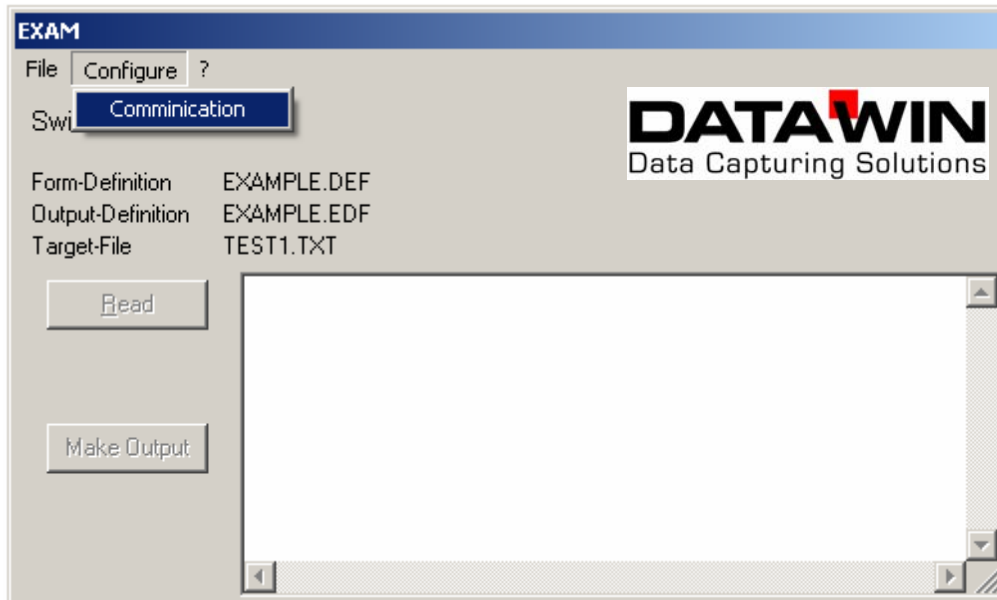
Edition April 2006/1.1  
Software version: V1.05 – 05.07.04

## Table of contents

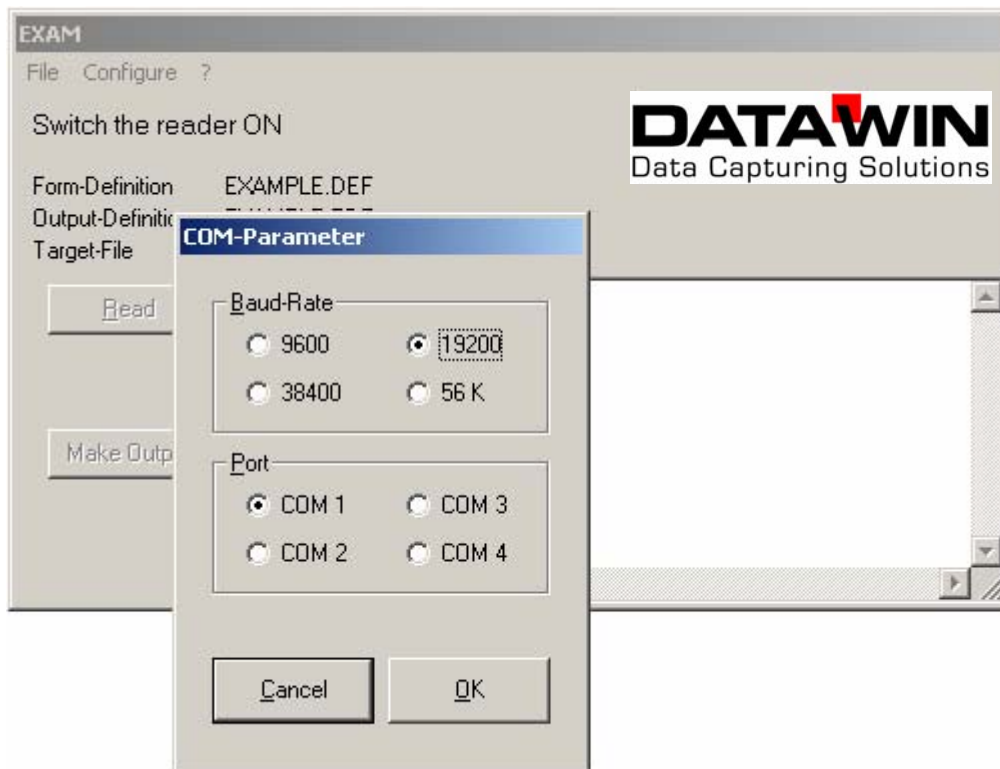
<b>1</b>	<b>CONFIGURATION .....</b>	<b>4</b>
<b>2</b>	<b>CREATING AN EXAM-FILE .....</b>	<b>5</b>
<b>3</b>	<b>OPENING AN EXAM-FILE .....</b>	<b>9</b>
<b>4</b>	<b>CHANGING AN EXAM-FILE .....</b>	<b>10</b>
<b>5</b>	<b>READING OF DOCUMENTS .....</b>	<b>11</b>
<b>6</b>	<b>ANALYZING OF READ DATA .....</b>	<b>12</b>
<b>7</b>	<b>THE DEFINITION-WINDOW .....</b>	<b>13</b>
<b>7.1</b>	<b><i>Normal</i> .....</b>	<b>13</b>
<b>7.2</b>	<b><i>Score</i>.....</b>	<b>14</b>
<b>8</b>	<b>EDIT READ DATA .....</b>	<b>16</b>

## 1 Configuration

For adjusting the COM-parameter call „Configure“ → „Communication“ at the menu.

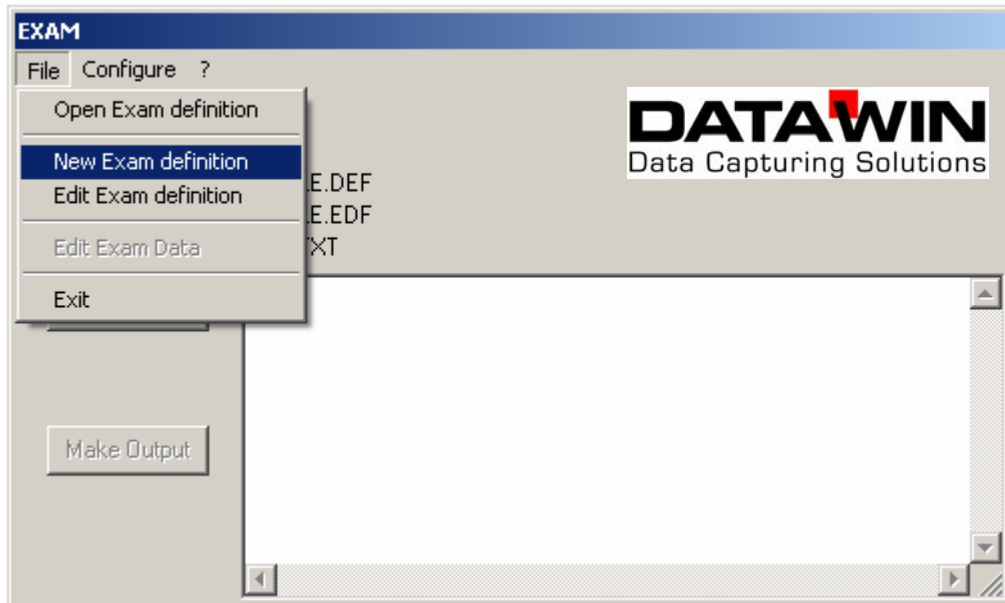


The interface parameters has to be adjusted in the opened window.

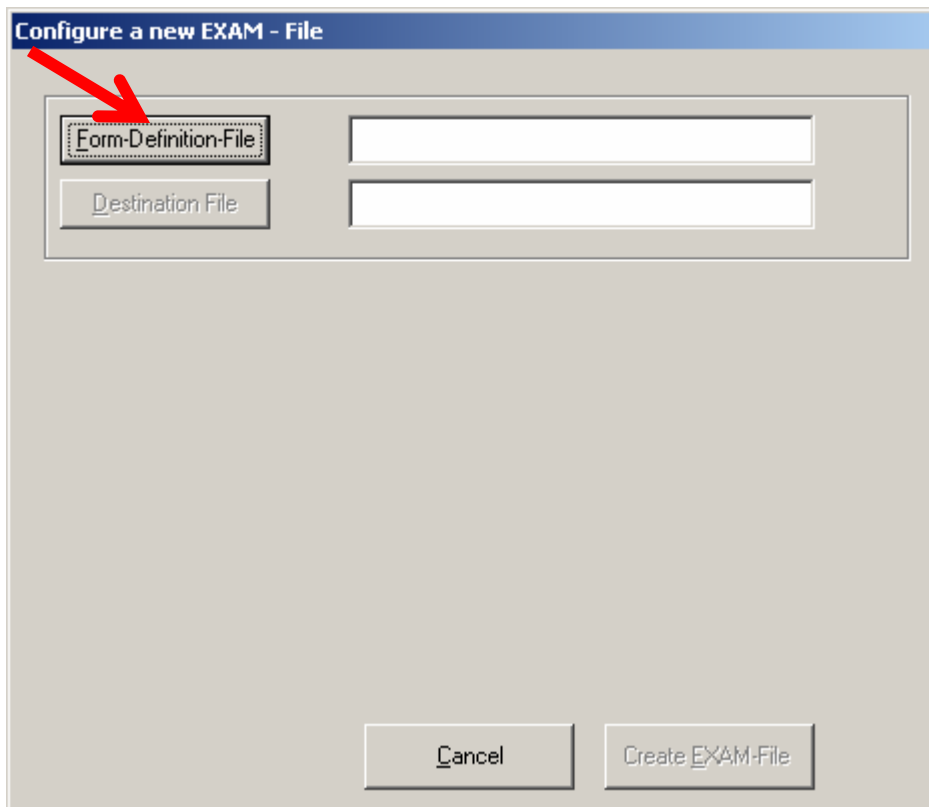


## 2 Creating an EXAM-File

For creating a new EXAM-File, call „File“ → „New Exam definition“ at the menu.



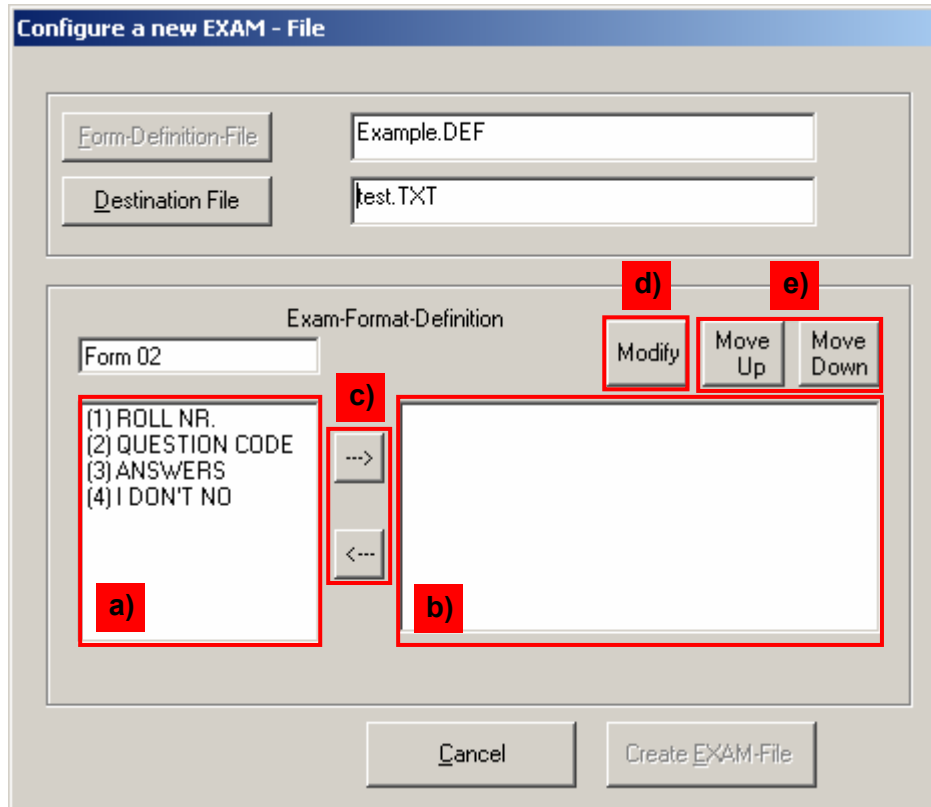
First a Form-Definition-File has to be loaded. Thus the document specifications are communicated to the software. This file normally is provided with the respective documents.



Afterwards a filename & path for saving the evaluation-files has to be define (format software dependent: .txt, .xls, .csv possible).

The screenshot shows a dialog box titled "Configure a new EXAM - File". It contains two input fields. The first field is labeled "Form-Definition-File" and contains the text "Example.DEF". The second field is labeled "Destination File" and is currently empty. A red arrow points to the "Destination File" label. At the bottom of the dialog, there are two buttons: "Cancel" and "Create EXAM-File".

After that the window expands about the definition part. There the fields inclusive their order and the kind of the respective field have to be predefined.



- a) available fields
- b) selected fields
- c) select marked field
- d) modify field attributes
- e) change field position

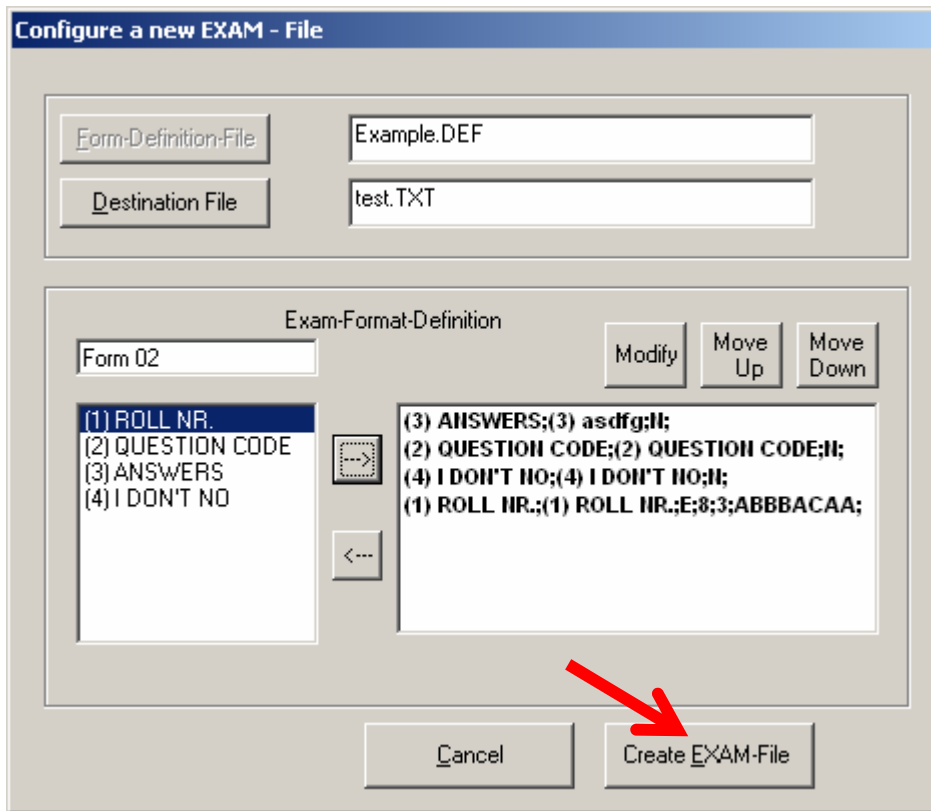
For selecting a field, mark it at a) and switch it by clicking on the arrow --> to b). In the self opening definition window the field attributes have to be defined before it is added (see 7).

For reversing a selection, mark field in b) and switch it by clicking on the arrow <-- back to a).

For changing field attributes mark it in b) and click on d) for opening the definition window.

For changing the field order, mark the desired field and move it with the buttons e).

Example for a complete EXAM-File:

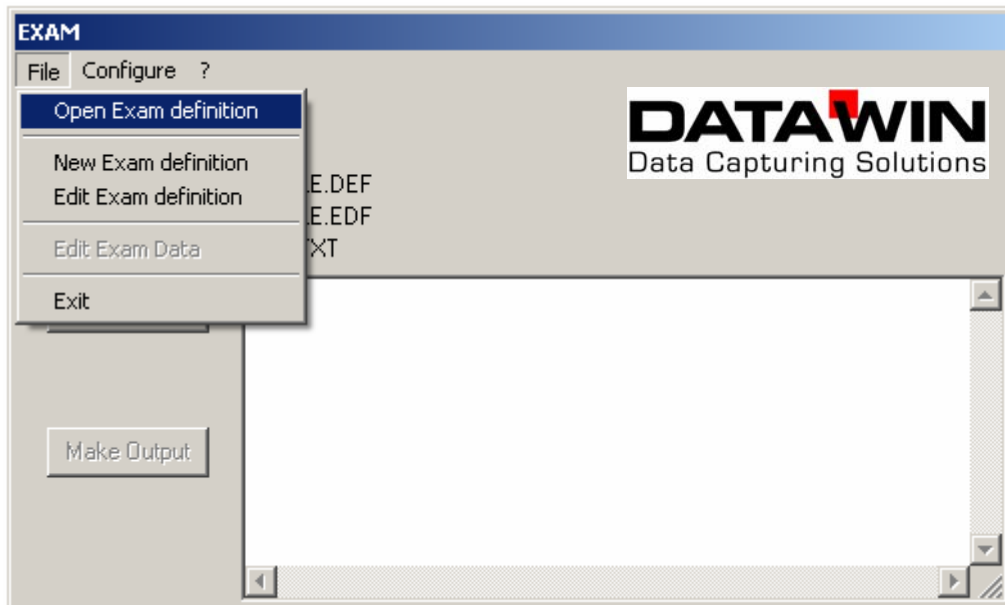


After creating and defining the new EXAM-File, save with the button „Create EXAM-File“.



### 3 Opening an EXAM-File

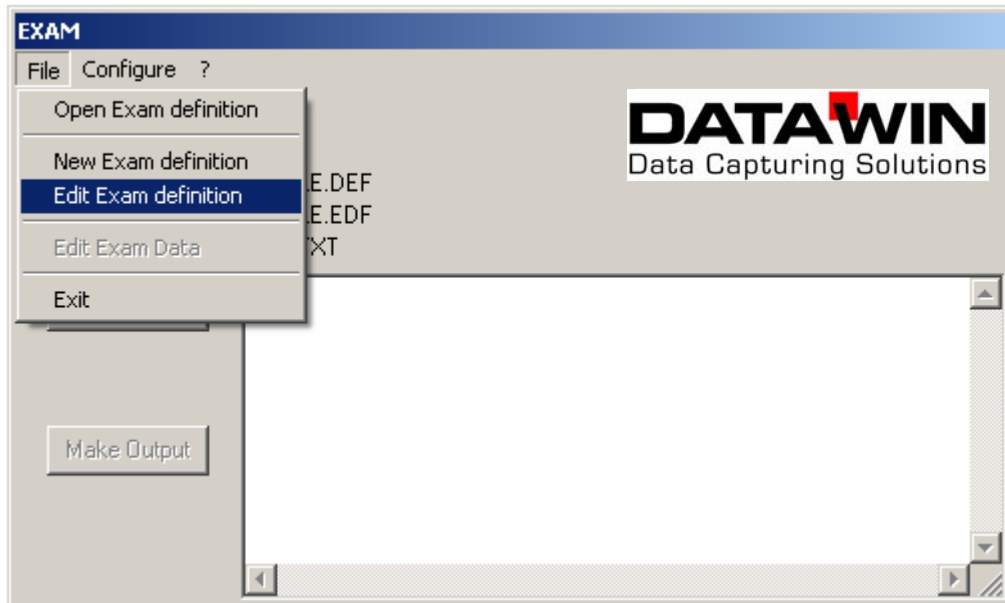
At the start of the EXAM-Software always the last used EXAM-File is loaded. But it is possible to load every created and saved EXAM-File and to use it for reading documents. It is not necessary to create it every time again. For this call „File“ → „Open Exam definition“ at the menu and load the desired EXAM-File.



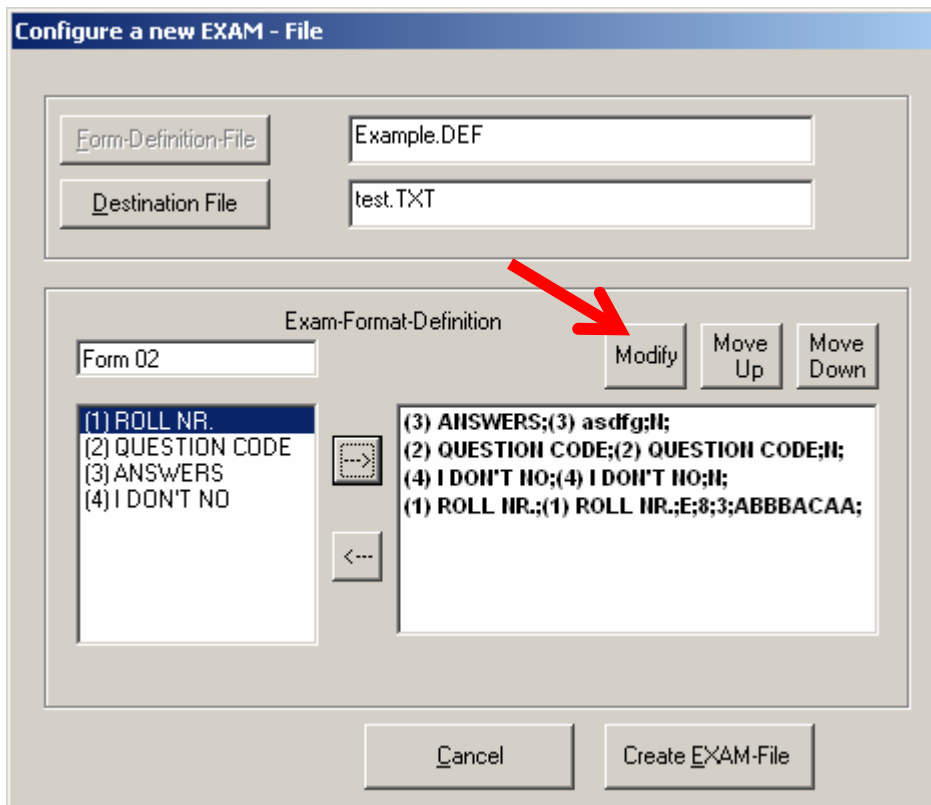
Afore read and **not** evaluated data are still available and are carried on. After an evaluation this data are abandoned in the EXAM-File. For using it again, they have to be read again. At the desired evaluation-file the data exist anymore.

#### 4 Changing an EXAM-File

An existing EXAM-File is changeable for every time. For this call „File“ → „Edit Exam definition“ at the menu.

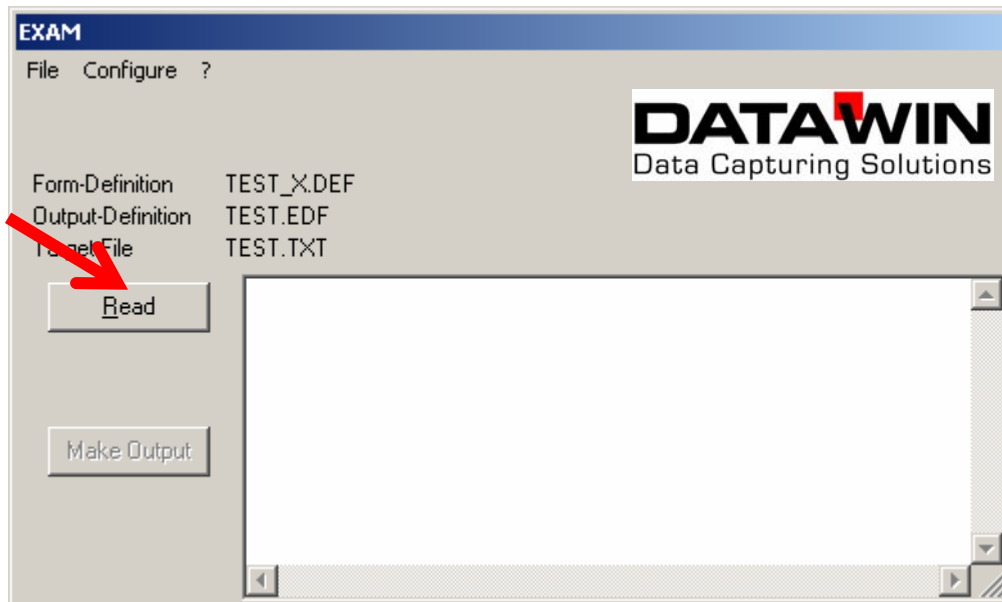


The well-known definition-window is displayed and with the button „Modify“ the field properties can be changed.

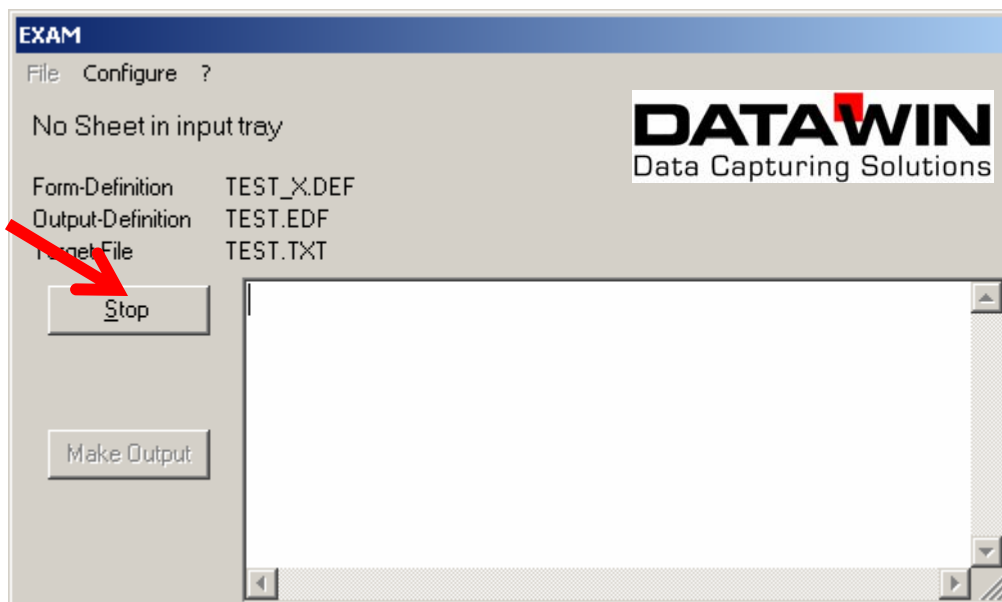


## 5 Reading of Documents

After turning on the OMR-Reader the reading process can be started with the button „Read“.

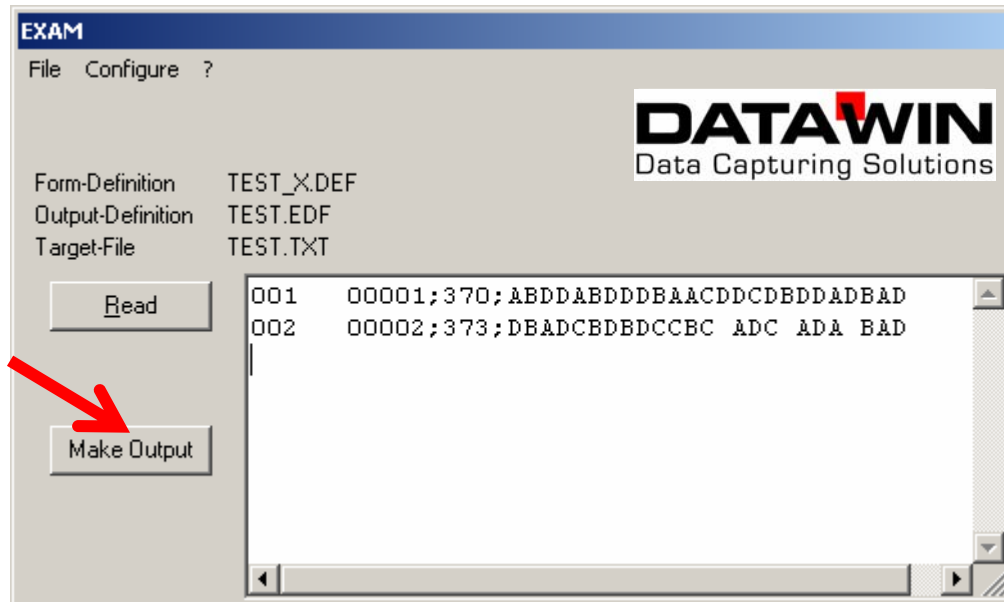


Documents are read until the button „Stop“ is clicked. During the reading process no further processes are possible.

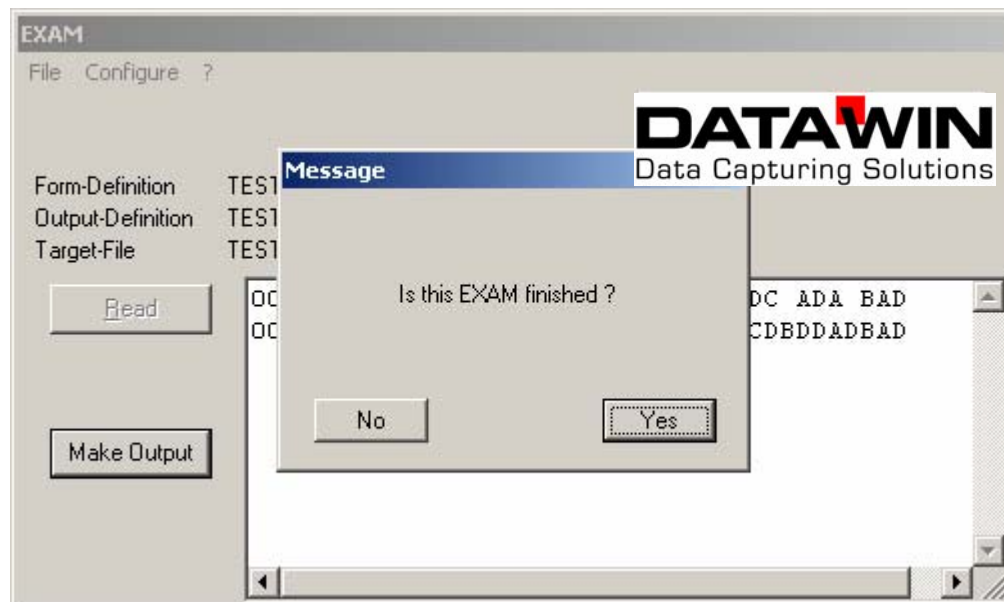


## 6 Evaluation of read data

To evaluate the read data use the button „Make Output“.



Confirm with „Yes“ and at the path, defined at the beginning, the evaluation-file is created in a folder called „Evaluation“.



### **ATTENTION:**

After an evaluation this data are abandoned in the EXAM-File. For using it again, they have to be read again.

## 6.1 The Definition-Window

### 6.2 Normal

At the field type „Normal“ no more input is necessary. Fields without result-mode are concerned (e.g. names, numbers).

The image shows a dialog box titled "Definition-Window" with a light gray background. It contains the following elements:

- Source - Fieldname:** A text input field containing "(4) IDON'T NO".
- Destination - Fieldname:** A text input field containing "(4) asdfg". A red arrow points to this field.
- Field type:** A section with two radio buttons: "Normal" (which is selected) and "Score". This section is enclosed in a red rectangular box.
- Buttons:** "Cancel" and "OK" buttons are located at the bottom of the dialog.

Optionally a fieldname for the evaluation file can be entered. If nothing is entered the source fieldname is taken.

### 6.3 Score

At the field type „Score“ more input is necessary. Fields with result-mode are concerned (a). Optionally you can enter a fieldname for the evaluation file. If nothing is entered the source fieldname is taken (b).

At first the range of the test has to be defined (c):

- number of questions
- number of possible answers

Source - Fieldname  
(1) ROLL NR.

Destination - Fieldname  
(1) ROLL NR. **b)**

Field type  
 Normal  Score **a)**

number of questions in this field   
number of answers per questions  **c)**

Cancel OK

The window expands and the correct answers have to be entered. Two possibilities are available:

- a) manual  
Enter the correct answers by setting checkmarks (a).
- b) OMR-Reader  
Enter a sample-document with correct answers at the OMR-Reader and read it with the button „Reading“(b).

Source - Fieldname  
(1) ROLL NR.

Destination - Fieldname  
(1) ROLL NR.

Field type  
 Normal  Score

correct answers mark

	A	B	C
01	<input checked="" type="checkbox"/>	<input type="checkbox"/>	<input type="checkbox"/>
02	<input type="checkbox"/>	<input checked="" type="checkbox"/>	<input type="checkbox"/>
03	<input type="checkbox"/>	<input checked="" type="checkbox"/>	<input type="checkbox"/>
04	<input type="checkbox"/>	<input checked="" type="checkbox"/>	<input type="checkbox"/>
05	<input checked="" type="checkbox"/>	<input type="checkbox"/>	<input type="checkbox"/>
06	<input type="checkbox"/>	<input type="checkbox"/>	<input checked="" type="checkbox"/>
07	<input checked="" type="checkbox"/>	<input type="checkbox"/>	<input type="checkbox"/>
08	<input checked="" type="checkbox"/>	<input type="checkbox"/>	<input type="checkbox"/>

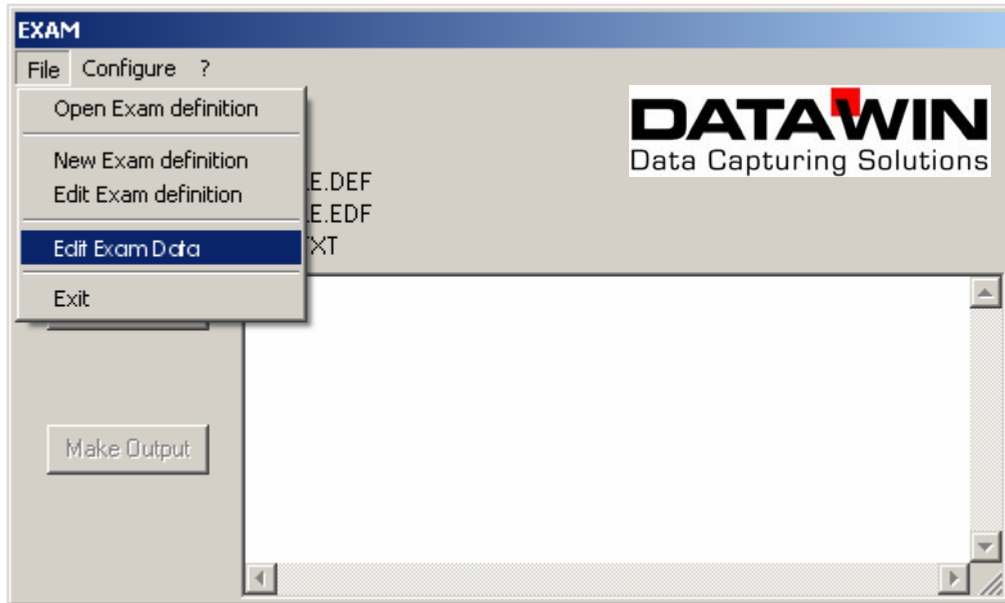
number of questions in this field: 8

number of answers per questions: 3

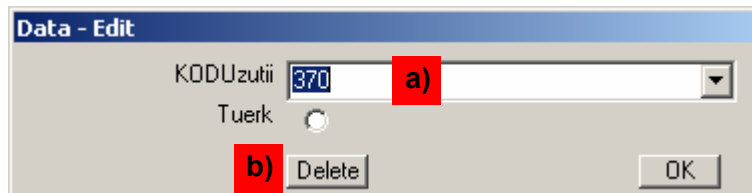
Buttons: Cancel, OK, Reading

## 7 Edit read data

Already read but not evaluated data can be edited anytime. Call „File“ → „Edit Exam Data“ at the menu.



At the new window join the desired document (a). To erase this record use the button „Delete“ (b).



To chance the checkmarks, activate the option field (c) and modify the checkmarks at the expanded window (d).

